

The black coated steel base (Q235) is equipped with 4 wheels and 4 half conical couplers for the attachment of the mast section, it could also be used with the outrigger as you need.

黑色烤漆底座，为桁架系统提供底部支撑点，配有四个万向轮和四个连接桁架的接头，可搭配斜撑使用。



The outrigger owns a 1.5 meters black trigger and 2.4m tube with connector; and can be connected in a 45° angle or with the adapter in a 90° angle with the base.

斜撑，两端配有可活动接头，同时连接立柱和底座，起固定作用。



The Sleeve Block is intended for tower of truss, the leavings up are one type of truss as standard, but can also be screwed on one-level bigger truss.

方套，为桁架系统横梁和立柱提供连接点，配有滑轮以及横梁接头，表面可做烤漆或阳极处理。



The top section provide a hanging point for manual hoist, with a Chrome Bar or Double Pulleys for electric hoist.

横担，用于立柱顶部，为葫芦提供吊点，表面可做烤漆或阳极处理。



GE34 TOWER

GE34 Tower components are available for:

- GE34 truss as main grid and tower
- GE44 truss as main grid and GE34 truss as tower

BASE

CODE GE34BS



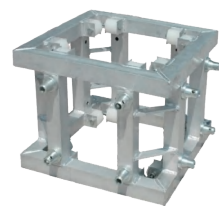
OUTRIGGER & STABILIZER

CODE GE34BS-150



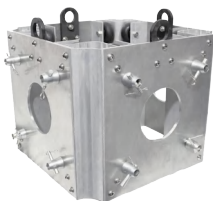
SLEEVE BLOCK TYPE 1

CODE GE34SLEEVE-A



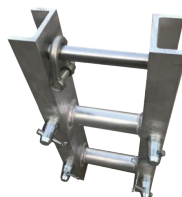
SLEEVE BLOCK TYPE 2

CODE GE34SLEEVE-B



TOP SECTION TYPE 1

CODE GE34TOP-A



TOP SECTION TYPE 2

CODE GE34TOP-B





GE44 TOWER

GE44 Tower components are available for:

- GE44 truss as main grid and tower
- GE44 /GE45/GE52/GE102/GE54/GE7652 truss as main grid and GE44 truss as tower

BASE TYPE 1

CODE GE44BS



BASE TYPE 2

CODE GE44BS-H



OUTRIGGER & STABILIZER

CODE GE44OS



OUTRIGGER & STABILIZER

CODE GE44BSO150



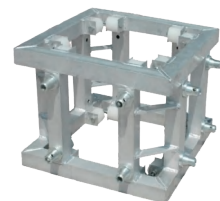
OUTRIGGER & STABILIZER

CODE GE44BSO-H



SLEEVE BLOCK TYPE 1

CODE GE44SLEEVE-A



SLEEVE BLOCK TYPE 2

CODE GE44SLEEVE-B



SLEEVE BLOCK TYPE 3

CODE GE44SLEEVE-C



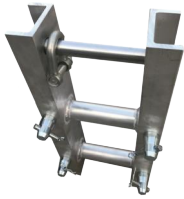
SLEEVE BLOCK TYPE 4

CODE GE44SLEEVE-D



TOP SECTION TYPE 1

CODE GE44TOP-A



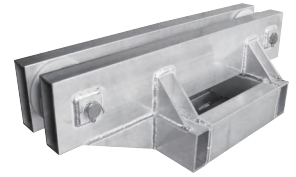
TOP SECTION TYPE 2

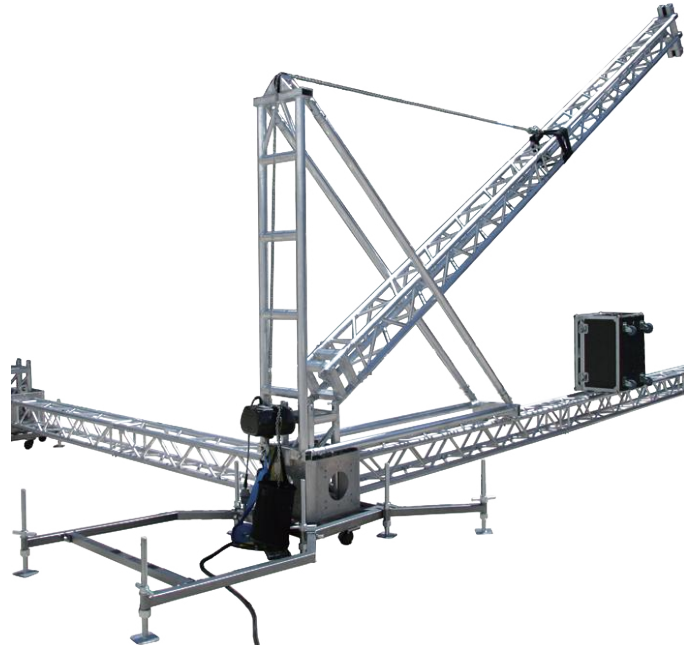
CODE GE44TOP-B



TOP SECTION TYPE 3

CODE GE44TOP-H





TOWER HELP ERECTING SYSTEM

Tower help erecting systems are available for:

- GE34 ground support tower
- GE44 ground support tower

GE34 TOWER LIFT

CODE GE34TL



| 47 / 26 - 318

73.43KG

GE44 TOWER LIFT

CODE GE44TL



| 59 / 26 - 318

76.22KG