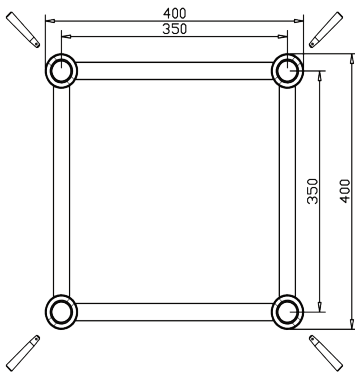


## GE44P SQUARE(AVAILABLE IN BLACK)

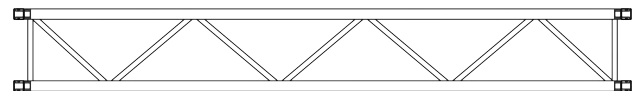
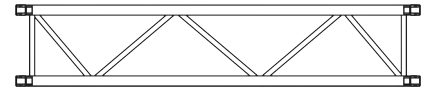
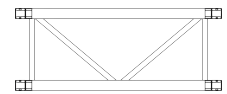
CODE	LENGTH	WEIGHT
GE44P050	50CM	6.50KG
GE44P100	100CM	9.50KG
GE44P150	150CM	12.40KG
GE44P200	200CM	15.80KG
GE44P250	250CM	18.60KG
GE44P300	300CM	21.70KG
GE44P350	350CM	24.60KG

## SECTION



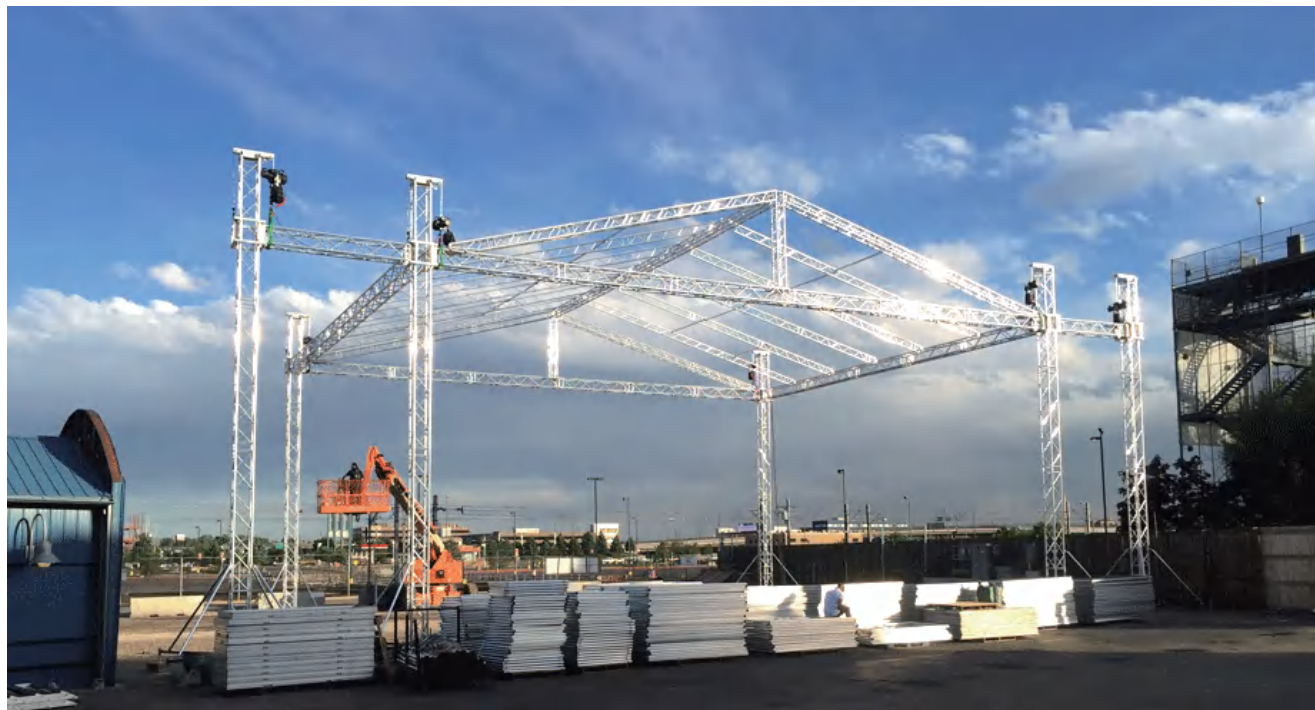
## TECHNICAL DATA

Pipe Diameter	50mm
Wall Thickness	3mm
Brace	25 x 3mm
Material	EN AW 6082 T6
Connectors	Included



## LOAD TABLE

Span	UDL	Deflection	CPL	Deflection	Point load in third-point	Deflection in quarter-point	Point load in quarter-point	Deflection	Point load in fifth-point	Deflection
长度	承重量/m	弯曲度	中间点承重量	弯曲度	两点承重量	弯曲度	三点承重量	弯曲度	四点承重量	弯曲度
m	kg   m	cm	kg	cm	kg	cm	kg	cm	kg	cm
4	942	0.83	1801	0.63	1180	0.71	888	0.74	757	0.8
5	706	1.51	1520	1.05	1018	1.19	787	1.29	650	1.35
6	503	2.25	1311	1.57	893	1.82	706	2	559	2.02
7	374	3.11	1151	2.21	793	2.58	624	2.82	489	2.82
8	288	4.12	1023	2.95	712	3.48	549	3.74	433	3.75
9	228	5.25	919	3.81	644	4.52	490	4.78	389	4.83
10	185	6.53	832	4.78	588	5.7	441	5.95	352	6.04
11	152	7.94	759	5.87	539	7.02	401	7.26	321	7.39
12	127	9.48	697	7.07	497	8.48	366	8.69	294	8.88
13	108	11.17	642	8.4	460	10.09	336	10.27	271	10.51
14	92	12.99	594	9.84	427	11.84	310	11.97	251	12.28
15	79	14.95	552	11.41	398	13.74	288	13.82	233	14.2
16	69	17.05	514	13.11	372	15.79	267	15.8	217	16.26
17	60	19.29	480	14.94	349	17.99	249	17.92	202	18.46
18	53	21.67	449	16.9	327	20.34	233	20.18	189	20.82
19	47	24.2	420	19	307	22.85	218	22.59	177	23.32
20	42	26.87	395	12.24	289	25.52	204	25.13	166	25.97



## **FS44P SQUARE**

FS44P is a 4-point truss system. This provides optimum volume and load capacity for its construction size and a tube diameter of 50mm. This system is connected via a special conical connector system, which is joined together to a complete form fit by means of a copper hammer, creating optimal traction.

FS44P finds application in trade fairs and shops, as well as in the event industry in general. It is also characterised by a minimum transport volume and the special lightweight design.

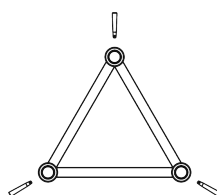
The conical connectors are of course included in the scope of delivery - special designs and powder coatings can be carried out at short notice.

FS44P 系列桁架为四方架系统，其材料均为通过 EN 认证的 6082 T6 铝合金型材，主管直径为 50mm，管壁厚度 3mm，副管直径 25mm，管壁厚度 3mm。此桁架为插销连接方式，属于中型载重桁架，主要为了解决中大型方案中的载重需求，适用于屋顶类方案中的顶部以及升降系统部分。桁架的设计由德国工程师研发，生产遵循德国工业标准，并荣获德国“RWTUV”认证是一款极具性价比的优势产品。桁架可依照需求进行特殊造型定制，以及表面可做烤漆处理。

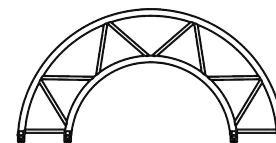
## **AVAILABLE IN**



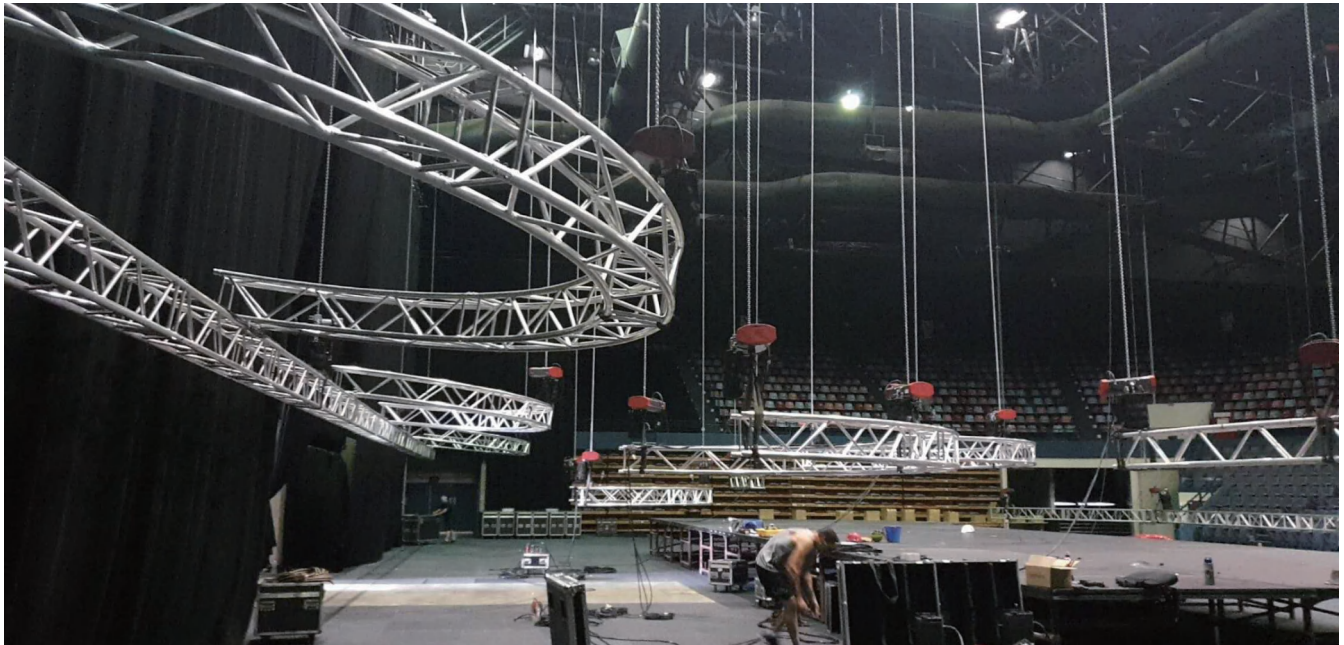
LADDER



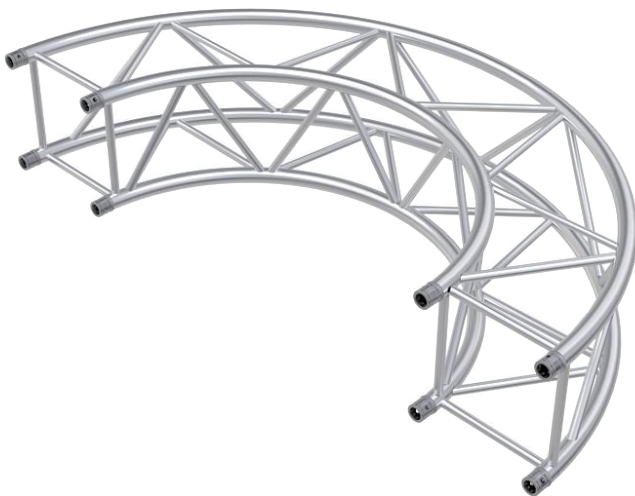
TRIANGLE



CIRCULAR



## GE44P CIRCLE(AVAILABLE IN BLACK)



CODE	DIAMETER	PART/DEG	WEIGHT
GE44PR10-180	2.0M	180°	19.00KG
GE44PR15-90	3.0M	90°	15.90KG
GE44PR20-90	4.0M	90°	20.50KG
GE44PR25-45	5.0M	45°	14.70KG
GE44PR30-45	6.0M	45°	16.70KG
GE44PR35-45	7.0M	45°	19.50KG
GE44PR40-45	8.0M	45°	21.30KG
GE44PR45-45	9.0M	45°	21.30KG
GE44PR50-30	10.0M	30°	16.70KG



### 90° 2 WAYS CORNER

CODE GE44PC21



| 40 / 50 - 50

6.92KG

### 120° 2 WAYS CORNER

CODE GE44PC22



| 40 / 50 - 50

6.80KG

### 135° 2 WAYS CORNER

CODE GE44PC23



| 40 / 50 - 50

9.01KG

### 90° 3 WAYS CORNER

CODE GE44PC30



| 50 / 50 - 50

9.40KG

### 3 WAYS T CORNER

CODE GE44PT35



| 40 / 50 - 50

8.61KG

### 90° 4 WAYS CORNER

CODE GE44PT40



| 50 / 50 - 50

10.30KG

### 4 WAYS CROSS CORNER

CODE GE44PC41



| 40 / 50 - 50

10.86KG

### 5 WAYS CORNER

CODE GE44PC55



| 50 / 50 - 50

11.78KG

### BOX CORNER

CODE GE44PBOX



| 40 / 40 - 40

8.37KG

### BASE PLATE

CODE GE44PBASE



| 5 / 40 - 40

1.80KG

### BOX HALF CONNECTOR

CODE GE44PBOX-C



### BASE CONNECTOR

CODE GE44PBASE-C



BOX SPACER

CODE GE44PBOXS100F



BASE HALF CONNECTOR

CODE 5003(ALUMINUM)  
CODE 5010(STEEL)



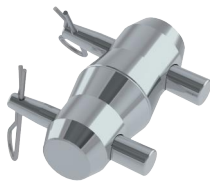
BOX HALF CONNECTOR

CODE GE44PBOX-C



CONICAL CONNECTOR

CODE 5002



CONICAL HINGE

CODE 5029SR  
CODE 5029SL



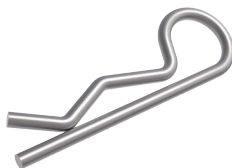
PIN

CODE 5004PIN



R CLIP

CODE 5004CLIP



PIN & BOLT

CODE 5005



SPACER MALE

CODE 5019M105  
CODE 5020M170  
CODE 5021M210



SPACER FEMALE

CODE 5019F105  
CODE 5020F170  
CODE 5021F210VV

