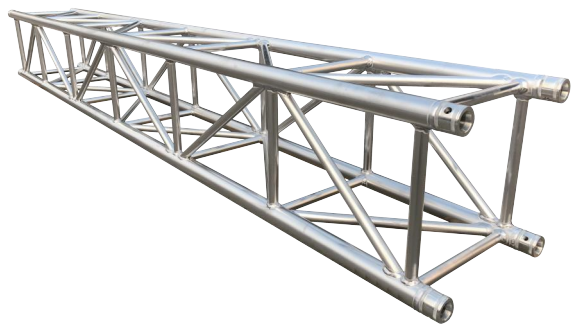


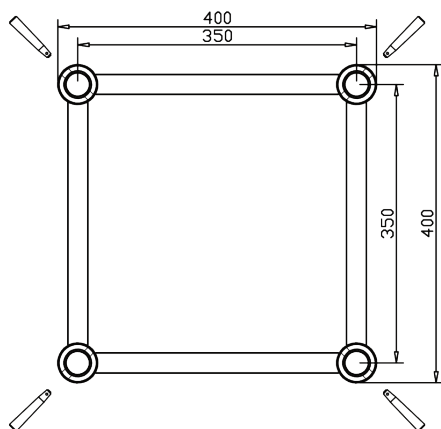


## GE44C SQUARE(AVAILABLE IN BLACK)



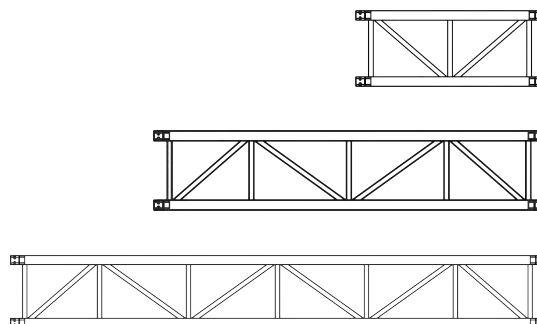
CODE	LENGTH	WEIGHT
GE44C050	50CM	7.00KG
GE44C100	100CM	11.18KG
GE44C150	150CM	12.10KG
GE44C200	200CM	16.90KG
GE44C250	250CM	18.90KG
GE44C300	300CM	21.00KG

## SECTION



## TECHNICAL DATA

Pipe Diameter	50mm
Wall Thickness	3mm
Brace	25 x 3mm
Material	EN AW 6082 T6
Connectors	Included



## LOAD TABLE

Span	UDL	Deflection	CPL	Deflection	Point load in third-point	Deflection	Point load in quarter-point	Deflection	Point load in fifth-point	Deflection
长度	承重量/m	弯曲度	中间点承重量	弯曲度	两点承重量	弯曲度	三点承重量	弯曲度	四点承重量	弯曲度
m	kg   m	cm	kg	cm	kg	cm	kg	cm	kg	cm
4	1036.2	0.58	1981.1	0.44	1298	0.49	976.8	0.51	832.7	0.56
5	776.6	1.05	1672	0.73	1119.8	0.83	865.7	0.90	715	0.94
6	553.3	1.57	1442.1	1.09	982.3	1.27	776.6	1.4	614.9	1.41
7	411.4	2.17	1266.1	1.54	872.3	1.80	686.4	1.97	537.9	1.97
8	316.8	2.88	1125.3	2.06	783.2	2.43	603.9	2.61	476.3	2.62
9	250.8	3.67	1010.9	2.66	708.4	3.16	539	3.34	427.9	3.38
10	203.5	4.57	915.2	3.34	646.8	3.99	485.1	4.16	387.2	4.22
11	167.2	5.55	834.9	4.10	592.9	4.91	441.1	5.08	353.1	5.17
12	139.7	6.63	766.7	4.94	546.7	5.93	402.6	6.08	323.4	6.21
13	118.8	7.81	706.2	5.88	506	7.06	369.6	7.18	298.1	7.35
14	101.2	9.09	653.4	6.88	469.7	8.28	341	8.37	276.1	8.59
15	86.9	10.4	607.2	7.98	437.8	9.61	316.8	9.67	256.3	9.94
16	75.9	11.9	565.4	9.17	409.2	11.0	293.7	11.0	238.7	11.3
17	66	13.5	528	10.4	383.9	12.5	273.9	12.5	222.2	12.9
18	58.3	15.1	493.9	11.8	359.7	14.2	256.3	14.1	207.9	14.5
19	51.7	16.9	462	13.3	337.7	15.9	239.8	15.8	194.7	16.3
20	46.2	18.8	434.5	14.8	317.9	17.8	224.4	17.5	182.6	18.1



## GE44C SQUARE

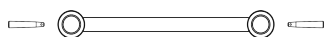
GE44C is a 4-point truss system. This provides optimum volume and load capacity for its construction size and a tube diameter of 50mm. This system is connected via a special conical connector system, which is joined together to a complete form fit by means of a copper hammer, creating optimal traction.

GE44C finds application in trade fairs and shops, as well as in the event industry in general. It is also characterised by a minimum transport volume and the special lightweight design.

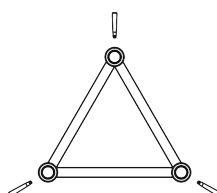
The conical connectors are of course included in the scope of delivery - special designs and powder coatings can be carried out at short notice.

GE44C 系列桁架为四方架系统，其材料均为通过 EN 认证的 6082 T6 铝合金型材，主管直径为 50mm，管壁厚度 3mm，副管直径 25mm，管壁厚度 3mm。此桁架为插销连接方式，属于中型桁架，主要为了解决中大型方案中的载重需求，适用于屋顶类方案中的顶部以及升降系统部分。桁架的设计由德国工程师研发，生产遵循德国工业标准，并荣获德国“RWTUV”认证，是一款极具性价比的优势产品。桁架可依照需求进行特殊造型定制，以及表面可做烤漆处理。

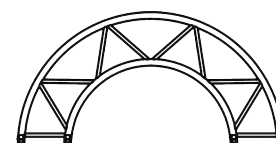
## AVAILABLE IN



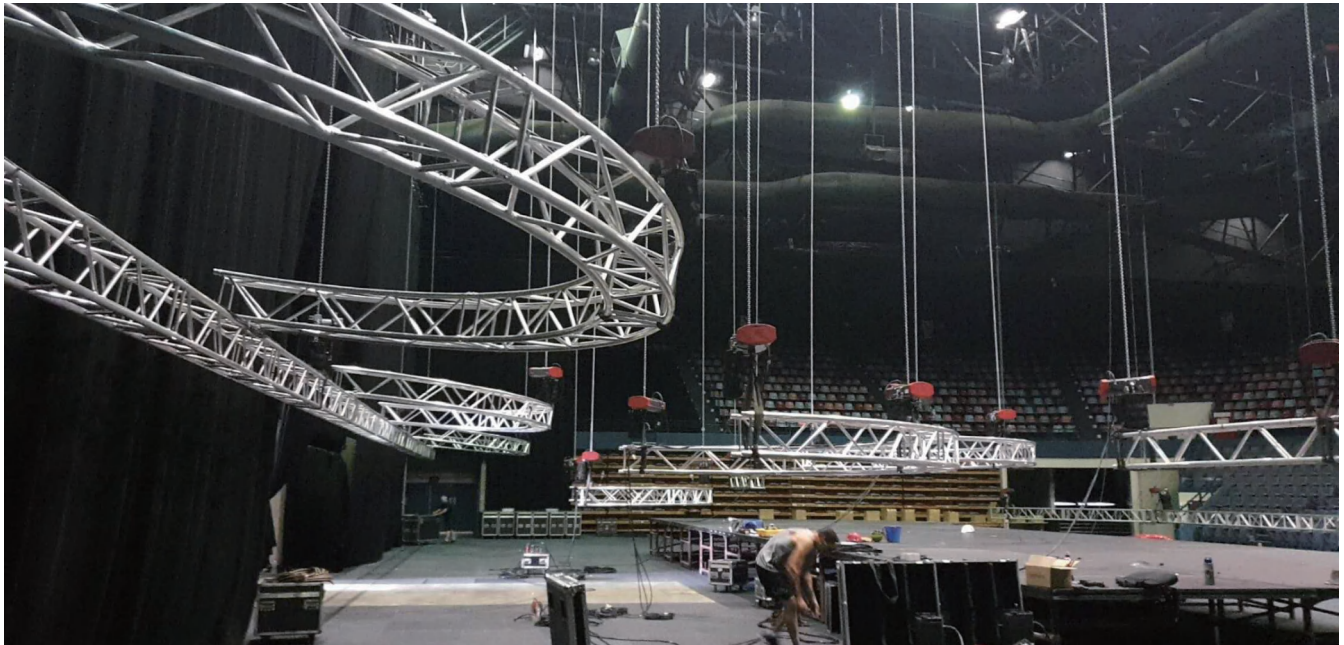
LADDER



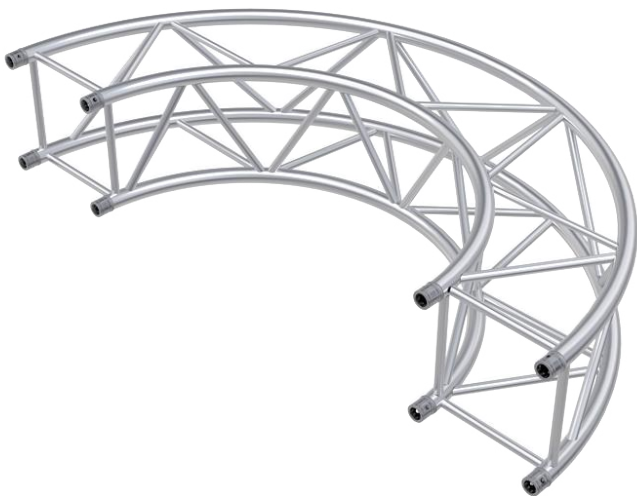
TRIANGLE



CIRCULAR



## GE44C CIRCLE(AVAILABLE IN BLACK)



CODE	DIAMETER	PART/DEG	WEIGHT
GE44CR10-180	2.0M	180°	19.00KG
GE44CR15-90	3.0M	90°	15.90KG
GE44CR20-90	4.0M	90°	20.50KG
GE44CR25-45	5.0M	45°	14.70KG
GE44CR30-45	6.0M	45°	16.70KG
GE44CR35-45	7.0M	45°	19.50KG
GE44CR40-45	8.0M	45°	21.30KG
GE44CR45-45	9.0M	45°	21.30KG
GE44CR50-30	10.0M	30°	16.70KG



### 90° 2 WAYS CORNER

CODE GE44CC21



| 40 / 50 - 50

6.92KG

### 120° 2 WAYS CORNER

CODE GE44CC22



| 40 / 50 - 50

6.80KG

### 135° 2 WAYS CORNER

CODE GE44CC23



| 40 / 50 - 50

9.01KG

### 90° 3 WAYS CORNER

CODE GE44CC30



| 50 / 50 - 50

9.40KG

### 3 WAYS T CORNER

CODE GE44CT35



| 40 / 50 - 50

8.61KG

### 90° 4 WAYS CORNER

CODE GE44CT40



| 50 / 50 - 50

10.30KG

### 4 WAYS CROSS CORNER

CODE GE44CC41



| 40 / 50 - 50

10.86KG

### 5 WAYS CORNER

CODE GE44CC55

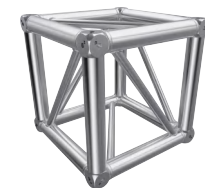


| 50 / 50 - 50

11.78KG

### BOX CORNER

CODE GE44CBOX

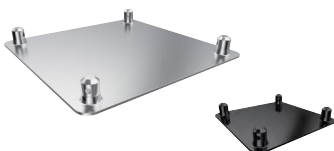


| 40 / 40 - 40

8.37KG

### BASE PLATE

CODE GE44CBASE



| 5 / 40 - 40

1.80KG

### BOX HALF CONNECTOR

CODE GE44CBOX-C



### BASE CONNECTOR

CODE GE44CBASE-C



BOX SPACER

CODE GE44CBOXS100F



BASE HALF CONNECTOR

CODE 5003(ALUMINUM)  
CODE 5010(STEEL)



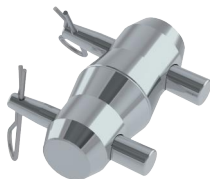
BOX HALF CONNECTOR

CODE GE44CBOX-C



CONICAL CONNECTOR

CODE 5002



CONICAL HINGE

CODE 5029SR  
CODE 5029SL



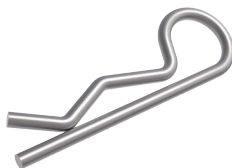
PIN

CODE 5004PIN



R CLIP

CODE 5004CLIP



PIN & BOLT

CODE 5005



SPACER MALE

CODE 5019M105  
CODE 5020M170  
CODE 5021M210



SPACER FEMALE

CODE 5019F105  
CODE 5020F170  
CODE 5021F210VV

