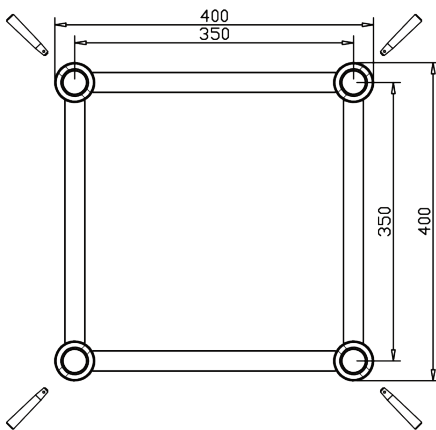


GE44 SQUARE(AVAILABLE IN BLACK)

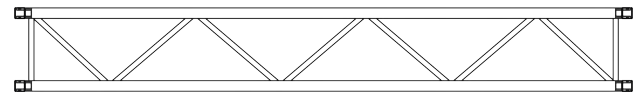
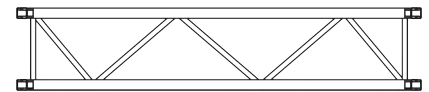
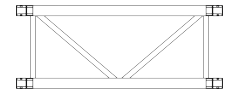
CODE	LENGTH	WEIGHT
GE44050	50CM	6.40KG
GE44100	100CM	9.20KG
GE44150	150CM	12.10KG
GE44200	200CM	16.90KG
GE44250	250CM	18.90KG
GE44300	300CM	21.00KG

SECTION



TECHNICAL DATA

Pipe Diameter	50mm
Wall Thickness	2.0mm
Braces	25 x 3mm
Material	EN AW 6082 T6
Connectors	Included



LOAD TABLE

Span	UDL	Deflection	CPL	Deflection	Point load in third-point	Deflection	Point load in quarter-point	Deflection	Point load in fifth-point	Deflection
长度	承重量/m	弯曲度	中间点承重量	弯曲度	两点承重量	弯曲度	三点承重量	弯曲度	四点承重量	弯曲度
m	kg m	cm	kg	cm	kg	cm	kg	cm	kg	cm
4,00	716	0.92	1232	0.64	809	0.71	611	0.75	517	0.81
5,00	481	1.52	1037	1.06	696	1.2	540	1.3	444	1.36
6,00	342	2.25	893	1.58	609	1.83	483	2.02	380	2.03
7,00	254	3.12	782	2.22	540	2.6	424	2.83	332	2.83
8,00	195	4.12	694	2.97	484	3.5	372	3.75	294	3.77
9,00	154	5.26	622	3.83	437	4.54	332	4.79	263	4.85
10,00	125	6.54	562	4.81	398	5.73	298	5.97	238	6.06
11,00	102	7.95	512	5.91	364	7.06	270	7.28	216	7.42
12,00	85	9.5	468	7.13	335	8.53	246	8.73	198	8.92
13,00	72	11.19	430	8.47	309	10.15	225	10.31	182	10.56
14,00	61	13.02	397	9.94	286	11.92	207	12.03	168	12.34
15,00	53	14.99	367	11.54	266	13.84	191	13.89	155	14.27
16,00	46	17.1	341	13.27	248	15.91	177	15.89	144	16.35
17,00	40	19.35	317	15.14	231	18.14	165	18.03	134	18.58
18,00	35	21.75	295	17.15	216	20.53	153	20.32	125	20.95
19,00	31	24.29	275	19.3	202	23.08	142	22.75	116	23.48
20,00	27	26.98	257	21.61	189	25.79	133	25.33	109	26.16



GE44 SQUARE

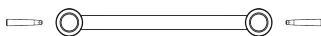
GE44 is a 4-point truss system. This provides optimum volume and load capacity for its construction size and a tube diameter of 50mm. This system is connected via a special conical connector system, which is joined together to a complete form fit by means of a copper hammer, creating optimal traction.

GE44 finds application in trade fairs and shops, as well as in the event industry in general. It is also characterised by a minimum transport volume and the special lightweight design.

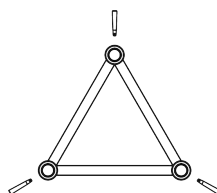
The conical connectors are of course included in the scope of delivery - special designs and powder coatings can be carried out at short notice.

GE44 系列桁架为四方架系统，其材料均为通过 EN 认证的 6082 T6 铝合金型材，主管直径为 50mm，管壁厚度 2mm，副管直径 25mm，管壁厚度 3mm。此桁架为插销连接方式，属于中型载重桁架，主要为了解决中大型方案中的载重需求，适用于屋顶类方案中的顶部以及升降系统部分。桁架的设计由德国工程师研发，生产遵循德国工业标准，并荣获德国“RWTUV”认证是一款极具性价比的优势产品。桁架可依照需求进行特殊造型定制，以及表面可做烤漆处理。

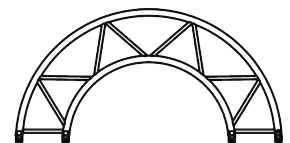
AVAILABLE IN



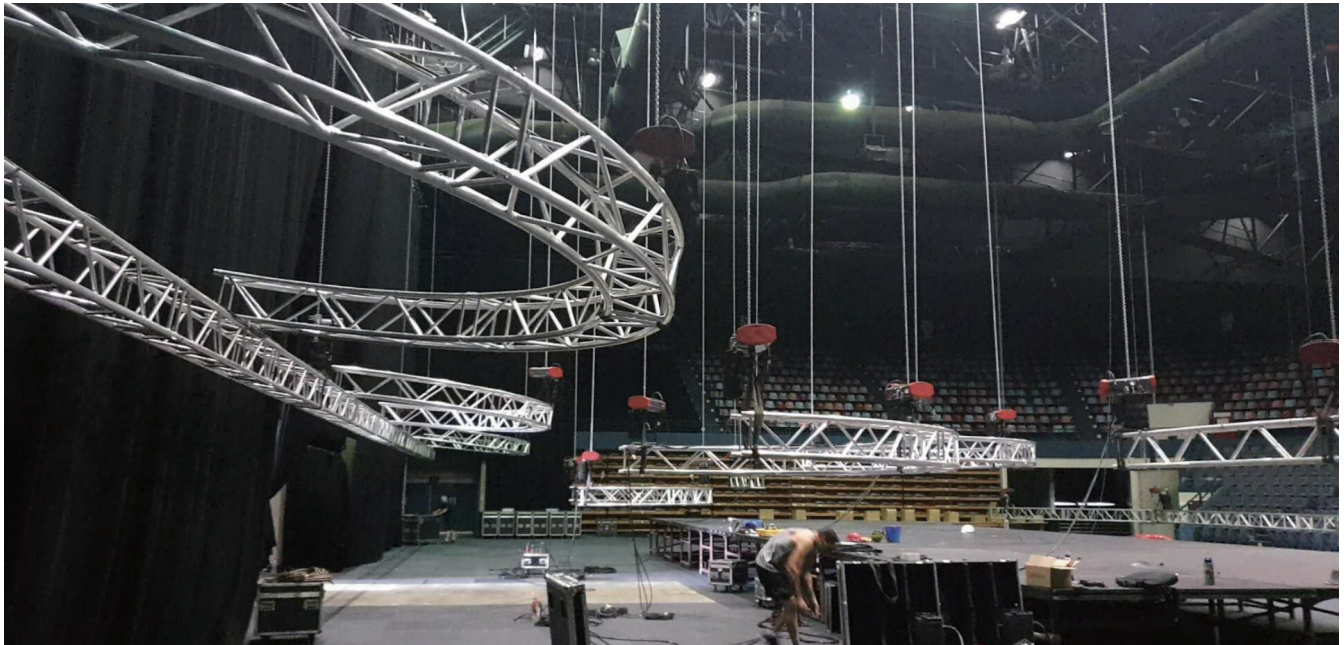
LADDER



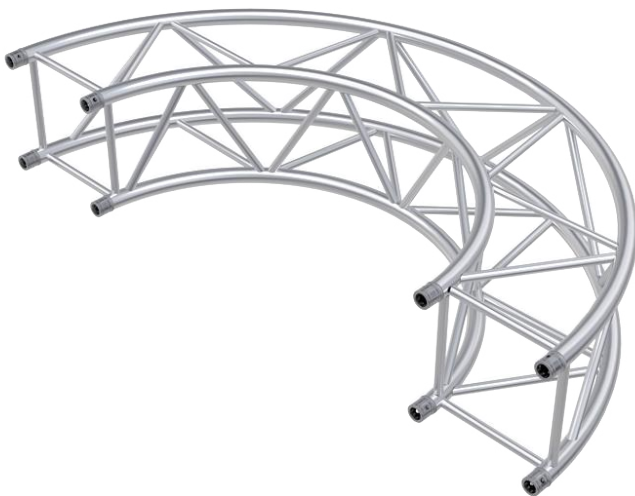
TRIANGLE



CIRCULAR



GE44 CIRCLE(AVAILABLE IN BLACK)



CODE	DIAMETER	PART/DEG	WEIGHT
GE44R10-180	2.0M	180°	19.00KG
GE44R15-90	3.0M	90°	15.90KG
GE44R20-90	4.0M	90°	20.50KG
GE44R25-45	5.0M	45°	14.70KG
GE44R30-45	6.0M	45°	16.70KG
GE44R35-45	7.0M	45°	19.50KG
GE44R40-45	8.0M	45°	21.30KG
GE44R45-45	9.0M	45°	21.30KG
GE44R50-30	10.0M	30°	16.70KG

90° 2 WAYS CORNER

CODE GE44C21



| 40 / 50 - 50

6.92KG

120° 2 WAYS CORNER

CODE GE44C22



| 40 / 50 - 50

6.80KG

135° 2 WAYS CORNER

CODE GE44C23



| 40 / 50 - 50

9.01KG

90° 3 WAYS CORNER

CODE GE44C30



| 50 / 50 - 50

9.40KG

3 WAYS T CORNER

CODE GE44T35



| 40 / 50 - 50

8.61KG

90° 4 WAYS CORNER

CODE GE44T40



| 50 / 50 - 50

10.30KG

4 WAYS CROSS CORNER

CODE GE44C41



| 40 / 50 - 50

10.86KG

5 WAYS CORNER

CODE GE44C55



| 50 / 50 - 50

11.78KG

BOX CORNER

CODE GE44BOX

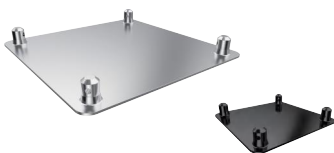


| 40 / 40 - 40

8.37KG

BASE PLATE

CODE GE44BASE



| 5 / 40 - 40

1.80KG

BOX HALF CONNECTOR

CODE GE44BOX-C



BASE CONNECTOR

CODE GE44BASE-C



BOX SPACER

CODE GE44BOXS100F



BASE HALF CONNECTOR

CODE 5003(ALUMINUM)
CODE 5010(STEEL)



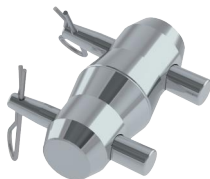
BOX HALF CONNECTOR

CODE GE44BOX-C



CONICAL CONNECTOR

CODE 5002



CONICAL HINGE

CODE 5029SR
CODE 5029SL



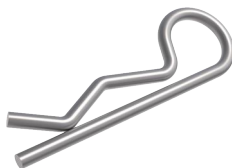
PIN

CODE 5004PIN



R CLIP

CODE 5004CLIP



PIN & BOLT

CODE 5005



SPACER MALE

CODE 5019M105
CODE 5020M170
CODE 5021M210



SPACER FEMALE

CODE 5019F105
CODE 5020F170
CODE 5021F210VV

