

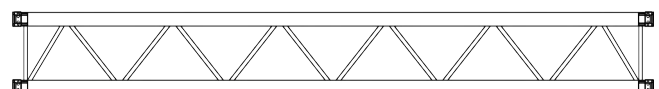
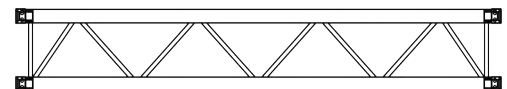
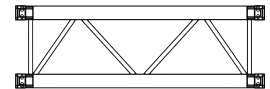
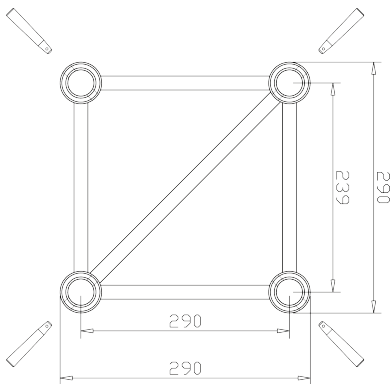
## GE34X SQUARE (AVAILABLE IN BLACK)

CODE	LENGTH	WEIGHT
GE34X050	50CM	4.90KG
GE34X100	100CM	7.50KG
GE34X150	150CM	9.70KG
GE34X200	200CM	12.00KG
GE34X250	250CM	14.00KG
GE34X300	300CM	16.00KG

## TECHNICAL DATA

Pipe Diameter	50mm
Wall Thickness	2mm
Braces	16x2mm
Material	EN AW 6082 T6
Connector	Included

## SECTION



## LOAD TABLE

Span	UDL	Deflection	CPL	Deflection	Point load in third-point	Deflection	Point load in quarter-point	Deflection	Point load in fifth-point	Deflection
长度	承重量/m	弯曲度	中间点承重量	弯曲度	三点承重量	弯曲度	四点承重量	弯曲度	五点承重量	弯曲度
m	kg/m	cm	kgs	cm	kgs	cm	kgs	cm	kgs	cm
3	650	1	1215	0.8	853.5	1.3	650	1.28	487.5	1.29
4	486.4	1.8	959.5	1.01	664	2.18	523.6	2.09	4112	2.09
5	367.1	2.8	791.1	1.64	555.2	3	424.9	3.06	337.3	3.09
6	253.5	4.1	671.5	2.43	476.1	4.2	356.6	4.22	285.4	4.29
7	185.1	5.5	581.9	3.39	415.9	5.8	306.5	5.56	246.7	5.68
8	140.6	7.2	5122	5.8	368.5	7	268.1	7.1	216.7	7.28
9	110.1	9.2	456.2	7.26	330	8.3	237.5	8.82	192.7	9.07
10	88.3	11.3	410.1	8.89	298.1	10.76	212.7	10.75	173.1	11.08
11	72.2	13.7	371.4	10.71	271.2	12.97	191.9	12.87	156.6	13.29
12	59.9	16.3	338.4	12.71	248.1	15.39	174.4	15.19	142.7	15.7
13	50.4	19.1	309.9	14.91	228.1	18.03	159.2	17.71	130.6	18.33
14	42.8	22.2	284.9	17.3	210.5	20.89	146.1	20.44	120	21.18
15	36.7	25.5	262.7	19.9	194.8	23.99	134.4	23.38	110.7	24.24
16	31.7	29	2429	22.71	180.8	27.32	124.1	26.53	102.3	27.52
						30.89		29.9		31.03



## GE34X SQUARE

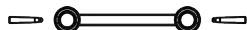
GE34X is a 4-point truss system. This provides optimum volume and load capacity for its construction size and a tube diameter of 50mm. This system is connected via a special conical connector system, which is joined together to a complete form fit by means of a copper hammer, creating optimal traction.

GE34X finds application in trade fairs and shops, as well as in the event industry in general. It is also characterised by a minimum transport volume and the special lightweight design.

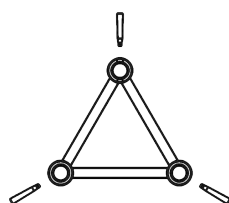
The conical connectors are of course included in the scope of delivery - special designs and powder coatings can be carried out at short notice.

GE34X 系列桁架为四方架系统，其材料均为通过 EN 认证的 6082 T6 铝合金型材，主管直径为 50mm，管壁厚度 2mm，副管直径 16mm，管壁厚度 2mm。此桁架为插销连接方式，属于多用途桁架的一种，可完美解决中小型方案的载重需求，此桁架既适用于展会，酒店，商场等场所的装饰，也能用于灯具挂载。桁架的设计由德国工程师研发，生产遵循德国工业标准并荣获德国“RWTUV”认证，是一款极具性价比的优势产品。桁架可依照需求进行特殊造型定制，以及表面可做烤漆处理

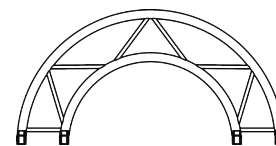
## AVAILABLE IN



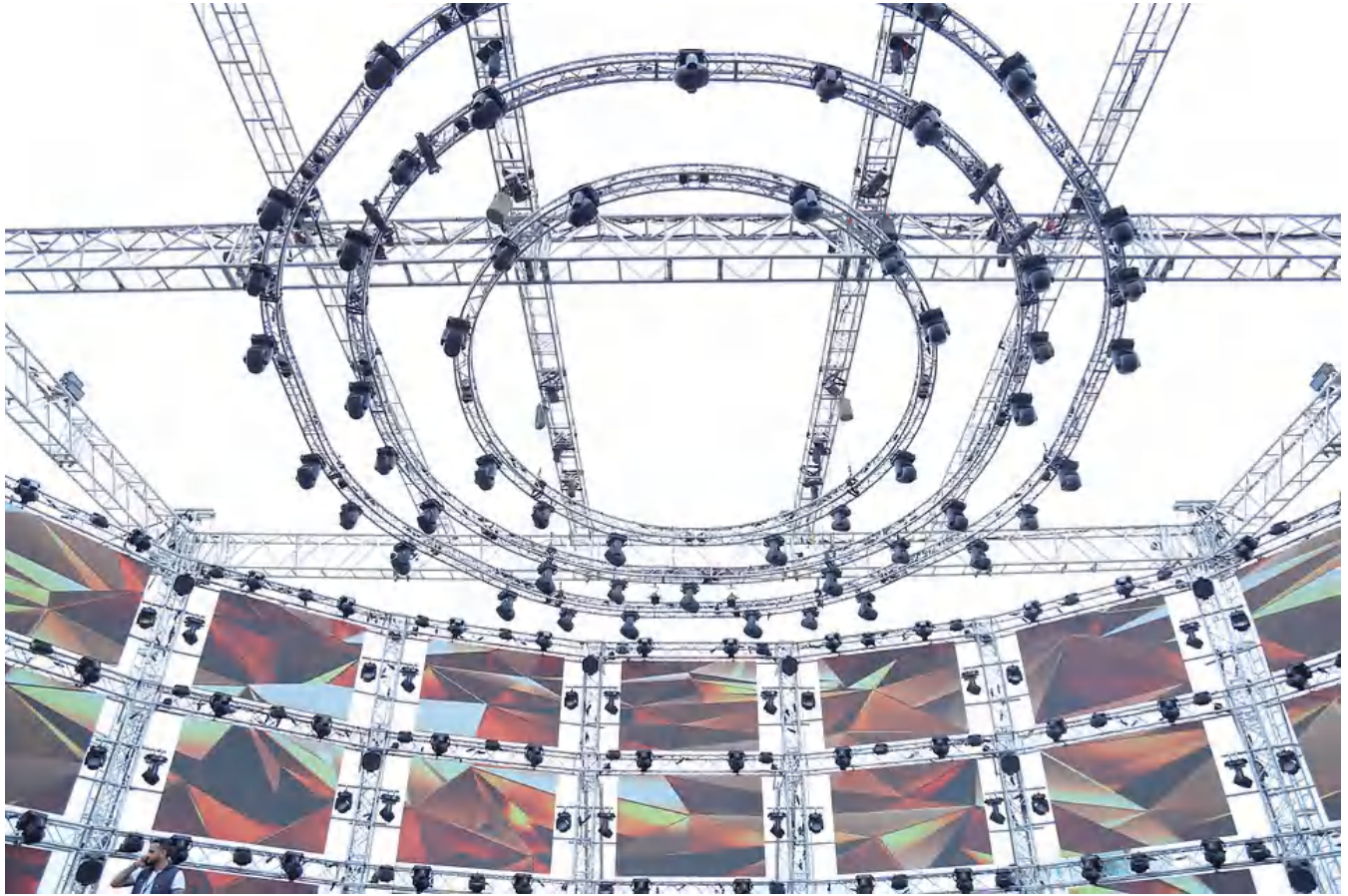
LADDER



TRIANGLE



CIRCULAR



## GE34X CIRCLE (AVAILABLE IN BALCK)

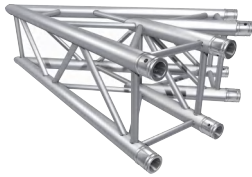


CODE	DIAMETER	PART/DEG	WEIGHT
GE34XR10-180	2.0M	180°	17.00KG
GE34XR15-90	3.0M	90°	13.00KG
GE34XR20-90	4.0M	90°	16.40KG
GE34XR25-45	5.0M	45°	11.20KG
GE34XR30-60	6.0M	60°	16.20KG
GE34XR35-45	7.0M	45°	15.00KG
GE34XR40-45	8.0M	45°	16.50KG
GE34XR45-45	9.0M	45°	19.00KG



### 45° 2 WAYS CORNER

CODE GE34XC19



| 29 / 100 - 100

8.85KG

### 60° 2 WAYS CORNER

CODE GE34XC20



| 29 / 100 - 100

9.97KG

### 90° 2 WAYS CORNER

CODE GE34XC21



| 29 / 50 - 50

6.27KG

### 120° 2 WAYS CORNER

CODE GE34XC22



| 29 / 50 - 50

6.48KG

### 135° 2 WAYS CORNER

CODE GE34XC23



| 29 / 50 - 50

6.63KG

### 90° 3 WAYS CORNER

CODE GE34XC30



| 50 / 50 - 50

8.98KG

### 3 WAYS T CORNER

CODE GE34XT35

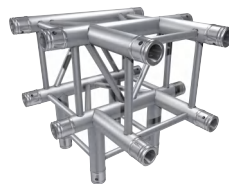


| 29 / 50 - 50

7.82KG

### 90° 4 WAYS CORNER

CODE GE34XT40

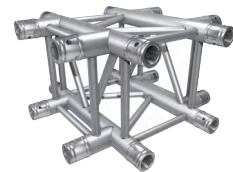


| 50 / 50 - 50

9.55KG

### 4 WAYS CROSS CORNER

CODE GE34XT41

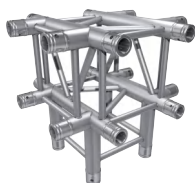


| 50 / 50 - 29

8.85KG

### 5 WAYS CORNER

CODE GE34XC55

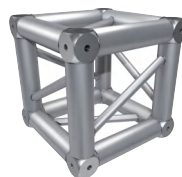


| 50 / 50 - 50

11.48KG

### BOX CORNER

CODE GE34XBOX

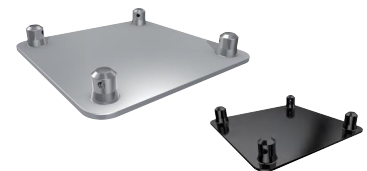


| 29 / 29 - 29

5.69KG

### BASE PLATE

CODE GE34XBASE



| 5 / 30 - 30

1.5KG

<p>FLEXIBLE CORNER</p>	<p>SPINDLE</p>	<p>BOX SPACER</p>
<p>CODE GE34XFC0-180</p>  <p>  29 / 8 - 34</p> <p>9.9KG</p>	<p>CODE GE34XSD</p>  <p>  35 / 29 - 29</p> <p>2.5KG</p>	<p>CODE GE34XBOXS105F CODE GE34XBOXS210F</p> 
<p>BOX HALF CONNECTOR</p>	<p>BASE HALF CONNECTOR</p>	<p>CONICAL CONNECTOR</p>
<p>CODE GE34XBOX-C</p> 	<p>CODE 5003(ALUMINUM) CODE 5010(STEEL)</p> 	<p>CODE 5002</p> 
<p>CONICAL HINGE</p>	<p>PIN</p>	<p>R CLIP</p>
<p>CODE 5029SR CODE 5029SL</p> 	<p>CODE 5004PIN</p> 	<p>CODE 5004CLIP</p> 
<p>PIN &amp; BOLT</p>	<p>SPACER MALE</p>	<p>SPACER FEMALE</p>
<p>CODE 5005</p> 	<p>CODE 5019M105 CODE 5020M170 CODE 5021M210</p> 	<p>CODE 5019F105 CODE 5020F170 CODE 5021F210</p> 