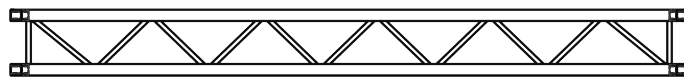
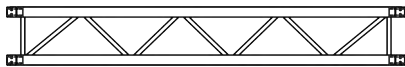
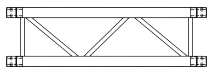
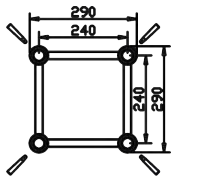


## GE34P SQUARE (AVAILABLE IN BLACK)

CODE	LENGTH	WEIGHT
GE34P050	50CM	5.00KG
GE34P100	100CM	7.30KG
GE34P150	150CM	9.60KG
GE34P200	200CM	12.00KG
GE34P250	250CM	14.00KG
GE34P300	300CM	16.40KG

## SECTION



## TECHNICAL DATA

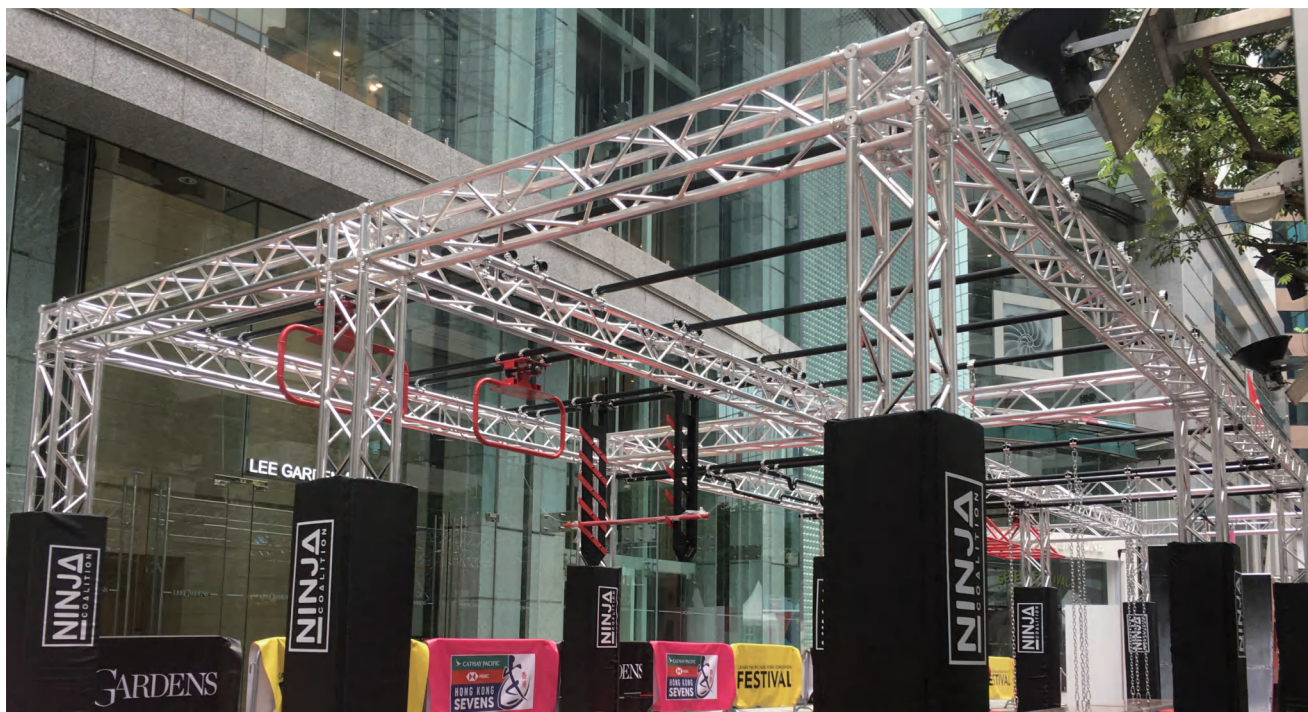
Pipe Diameter	50mm
Wall Thickness	3mm
Braces	20x2mm
Material	EN AW 6082 T6
Connector	Included

## GE34P CIRCLE (AVAILABLE IN BLACK)

CODE	DIAMETER	PART/DEG	WEIGHT
GE34PR10-180	2.0M	180°	18.00KG
GE34PR15-90	3.0M	90°	14.00KG
GE34PR20-90	4.0M	90°	17.40KG
GE34PR25-45	5.0M	45°	12.20KG
GE34PR30-60	6.0M	60°	17.20KG
GE34PR35-45	7.0M	45°	16.00KG
GE34PR40-45	8.0M	45°	17.50KG
GE34PR45-45	9.0M	45°	20.00KG

## LOAD TABLE

Span	UDL	Deflection	CPL	Deflection	Point load in third-point	Deflection	Point load in quarter-point	Deflection	Point load in fifth-point	Deflection
长度	承重量/m	弯曲度	中间点承重量	弯曲度	三点承重量	弯曲度	四点承重量	弯曲度	五点承重量	弯曲度
m	kg   m	cm	kg	cm	kg	cm	kg	cm	kg	cm
4	500	0.93	1350	1	911	1.15	667	1.17	500	1.12
5	399	1.82	1120	1.63	774	1.92	605	2.09	476	2.09
6	331	3.14	954	2.42	668	2.88	509	3.05	403	3.08
7	261	4.61	829	3.37	586	4.04	438	4.21	350	4.27
8	200	6.06	730	4.49	520	5.4	384	5.55	308	5.66
9	157	7.7	651	5.76	467	6.96	341	7.08	274	7.25
10	126	9.54	586	7.21	422	8.73	305	8.8	247	9.04
11	104	11.58	531	8.83	384	10.71	276	10.71	224	11.04
12	86	13.82	484	10.62	352	12.89	251	12.82	204	13.23
13	73	16.26	444	12.59	324	15.29	229	15.12	187	15.64
14	62	18.91	408	14.75	299	17.91	211	19.63	172	18.25
15	53	21.75	377	17.09	277	20.74	194	20.33	159	21.07
16	46	24.81	349	19.63	257	23.8	179	23.24	147	24.11
17	40	28.07	323	22.37	239	27.08	166	26.35	136	27.35
18	35	31.54	301	25.31	223	30.59	154	29.68	127	31.82



## GE34P SQUARE

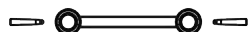
GE34P is a 4-point truss system. This provides optimum volume and load capacity for its construction size and a tube diameter of 50mm. This system is connected via a special conical connector system, which is joined together to a complete form fit by means of a copper hammer, creating optimal traction.

GE34P finds application in trade fairs and shops, as well as in the event industry in general. It is also characterised by a minimum transport volume and the special lightweight design.

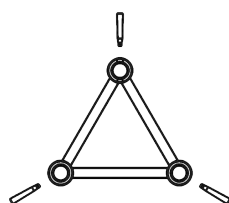
The conical connectors are of course included in the scope of delivery - special designs and powder coatings can be carried out at short notice.

GE34P 系列桁架为四方架系统，其材料均为通过 EN 认证的 6082 T6 铝合金型材，主管直径为 50mm，管壁厚度 3mm，副管直径 20mm，管壁厚度 2mm。此桁架为插销连接方式，属于多用途桁架的一种，可完美解决中小型方案的载重需求，此桁架既适用于展会，酒店，商场等场所的装饰，也能用于灯具挂载。桁架的设计由德国工程师研发，生产遵循德国工业标准并荣获德国“RWTUV”认证，是一款极具性价比的优势产品。桁架可依照需求进行特殊造型定制，以及表面可做烤漆处理。

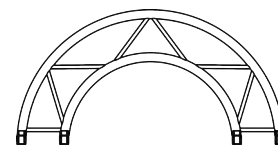
## AVAILABLE IN



LADDER



TRIANGLE



CIRCULAR



## GE34P CIRCLE (AVAILABLE IN BALCK)

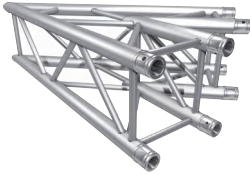


CODE	DIAMETER	PART/DEG	WEIGHT
GE34PR10-180	2.0M	180°	17.00KG
GE34PR15-90	3.0M	90°	13.00KG
GE34PR20-90	4.0M	90°	16.40KG
GE34PR25-45	5.0M	45°	11.20KG
GE34PR30-60	6.0M	60°	16.20KG
GE34PR35-45	7.0M	45°	15.00KG
GE34PR40-45	8.0M	45°	16.50KG
GE34PR45-45	9.0M	45°	19.00KG



### 45° 2 WAYS CORNER

CODE GE34PC19

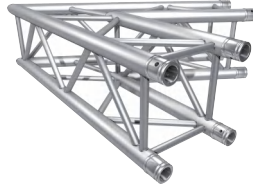


| 29 / 100 - 100

8.85KG

### 60° 2 WAYS CORNER

CODE GE34PC20



| 29 / 100 - 100

9.97KG

### 90° 2 WAYS CORNER

CODE GE34PC21



| 29 / 50 - 50

6.27KG

### 120° 2 WAYS CORNER

CODE GE34PC22



| 29 / 50 - 50

6.48KG

### 135° 2 WAYS CORNER

CODE GE34PC23



| 29 / 50 - 50

6.63KG

### 90° 3 WAYS CORNER

CODE GE34PC30



| 50 / 50 - 50

8.98KG

### 3 WAYS T CORNER

CODE GE34PT35

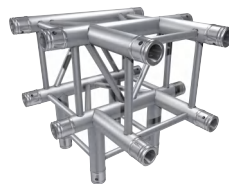


| 29 / 50 - 50

7.82KG

### 90° 4 WAYS CORNER

CODE GE34PT40

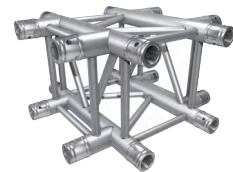


| 50 / 50 - 50

9.55KG

### 4 WAYS CROSS CORNER

CODE GE34PT41



| 50 / 50 - 29

8.85KG

### 5 WAYS CORNER

CODE GEP34C55

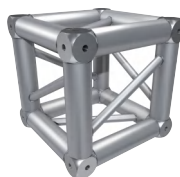


| 50 / 50 - 50

11.48KG

### BOX CORNER

CODE GE34PBOX

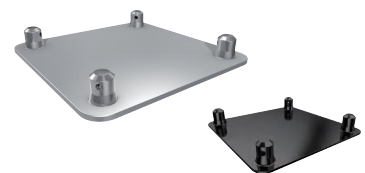


| 29 / 29 - 29

5.69KG

### BASE PLATE

CODE GE34PBASE



| 5 / 30 - 30

1.5KG

FLEXIBLE CORNER

CODE GE34PFC0-180



| 29 / 8 - 34

9.9KG

SPINDLE

CODE GE34PSD



| 35 / 29 - 29

2.5KG

BOX SPACER

CODE GE34PBOXS105F  
CODE GE34PBOXS210F



BOX HALF CONNECTOR

CODE GE34PBOX-C



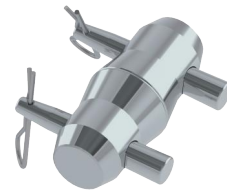
BASE HALF CONNECTOR

CODE 5003(ALUMINUM)  
CODE 5010(STEEL)



CONICAL CONNECTOR

CODE 5002



CONICAL HINGE

CODE 5029SR  
CODE 5029SL



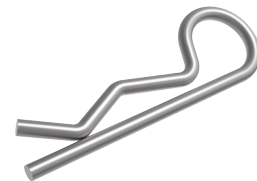
PIN

CODE 5004PIN



R CLIP

CODE 5004CLIP



PIN & BOLT

CODE 5005



SPACER MALE

CODE 5019M105  
CODE 5020M170  
CODE 5021M210



SPACER FEMALE

CODE 5019F105  
CODE 5020F170  
CODE 5021F210

