

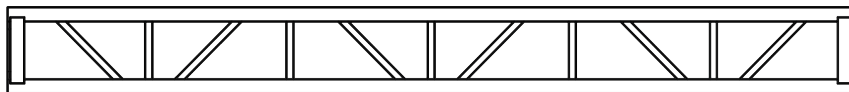
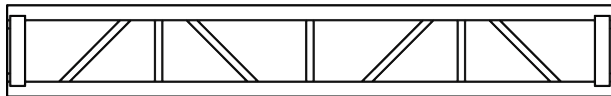
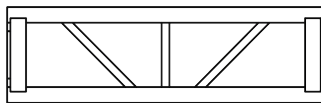
GE305B SQUARE

CODE	LENGTH	WEIGHT
GE305B050	50CM	9.70KG
GE305B100	100CM	14.30KG
GE305B150	150CM	16.00KG
GE305B200	200CM	19.50KG
GE305B250	250CM	23.00KG
GE305B250	300CM	28.00KG

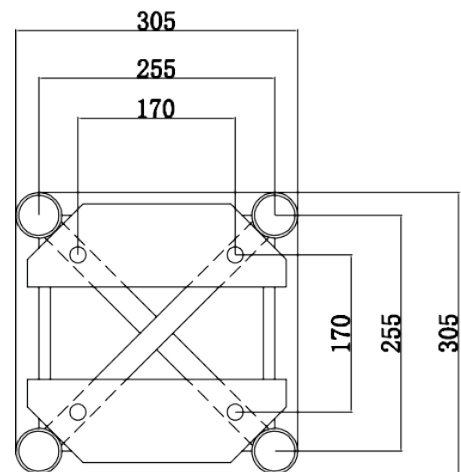


TECHNICAL DATA

Pipe Diameter	50mm
Wall Thickness	3.0mm
Brace	25 x 3mm
Material	EN AW 6082 T6



SECTION



LOAD TABLE

Span	UDL	Deflection	CPL	Deflection	TPL	Deflection	QPL	Deflection
长度	承重量/M	弯曲度	中心承重量	弯曲度	三点承重量	弯曲度	四点承重量	弯曲度
m	kg/m	cm	kgs	cm	kgs	cm	kg	cm
3.05	2023	0.4	1012	0.3	759	0.4	506	0.4
6.09	962	1.4	482	1.2	362	1.5	241	1.4
9.14	585	3.1	295	2.6	221	3.2	147	2.9
12.21	381	5.5	193	4.7	145	5.7	97	5.4



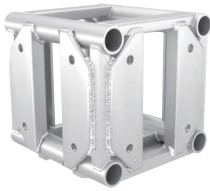
GE305B SQUARE

GE305B truss is ideal for conference, exhibition, and small venue work. The truss is consist of 50x3mm tube for the main chords and 25x3mm tube for diagonals. The trussing segments are connected by bolting the aluminum plates together.

GE305B 为四方架系统，其材料均为通过 EN 认证的 6082 T6 铝合金型材，主管直径为 50mm，管壁厚度 3mm，副管直径 25mm，管壁厚度 3mm。此桁架通过螺丝进行连接，属于轻型载重桁架，适用于酒店，展会，小型文艺演出等方案中的灯具音响挂载，桁架的设计生产遵循德国工业标准，并荣获德国“RWTUV”认证，是一款极具性价比的优势产品。桁架可依照需求进行特殊造型定制，表面可做烤漆处理。

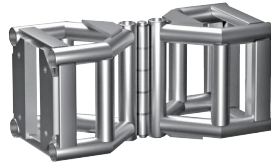
BOX CORNER

CODE GE305BOX



VARIABLE CORNER

CODE GE305VC



FIXED CORNER

CODE GE305FC



LIFTING POINT

CODE GE305LP



CONNECTING PLATE

CODE GE305CP

