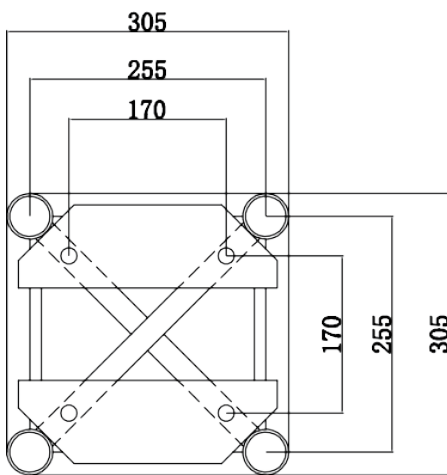




## GE305A SQUARE(AVAILABLE IN BLACK)

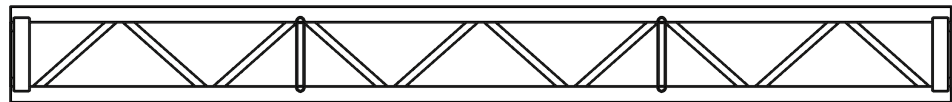
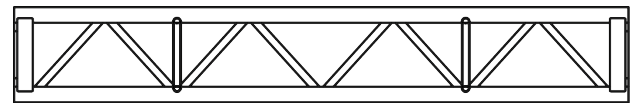
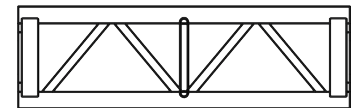
CODE	LENGTH	WEIGHT
GE305A050	50CM	11.70KG
GE305A100	100CM	14.30KG
GE305A150	150CM	16.00KG
GE305A200	200CM	18.00KG
GE305A250	250CM	21.00KG
GE305A300	300CM	25.00KG

## SECTION



## TECHNICAL DATA

Pipe Diameter	50mm
Wall Thickness	3.0mm
Brace	25 x 3mm
Material	EN AW 6082 T6



## LOAD TABLE

Span	UDL	Deflection	CPL	Deflection	Point load in third-point	Deflection	Point load in quarter-point	Deflection
长度	承重量/m	弯曲度	中间点承重量	弯曲度	两点承重量	弯曲度	三点承重量	弯曲度
m	kg   m	cm	kg	cm	kg	cm	kg	cm
2	1619.75	0.11	1619.75	0.09	1214.765	0.11	809.875	0.11
4	399.665	0.45	799.425	0.36	599.545	0.46	399.665	0.43
6	173.755	1.01	521.36	0.81	391.02	1.03	260.68	0.96
8	94.715	1.8	378.765	1.46	284.05	1.83	189.43	1.72
10	58.14	2.82	290.51	2.32	217.835	2.87	145.255	2.7
12	38.19	4.12	229.33	3.4	171.95	4.15	114.665	3.91
13	31.54	4.06	204.915	4.03	153.71	4.89	102.505	4.61
14	26.22	5.59	183.54	4.73	137.655	5.68	91.77	5.37
15	21.945	6.43	164.635	5.48	123.405	6.54	82.27	6.2
16	18.43	7.42	147.535	6.31	110.675	7.46	73.815	7.09



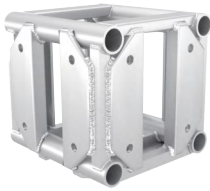
## **GE305A SQUARE**

GE305A truss is ideal for conference, exhibition, and small venue work. The truss consists of 50x3mm tube for the main chords and 25x3mm tube for diagonals. The trussing segments are connected by bolting the aluminum plates together.

GE305A 为四方架系统，其材料均为通过 EN 认证的 6082 T6 铝合金型材，主管直径为 50mm，管壁厚度 3mm，副管直径 25mm，管壁厚度 3mm。此桁架通过螺丝进行连接，属于轻型载重桁架，适用于酒店，展会，小型文艺演出等方案中的灯具音响挂载，桁架的设计生产遵循德国工业标准，并荣获德国“RWTUV”认证，是一款极具性价比的优势产品。桁架可依照需求进行特殊造型定制，表面可做烤漆处理。

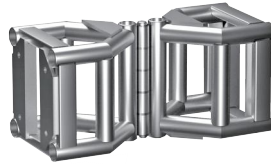
## BOX CORNER

CODE GE305BOX



## VARIABLE CORNER

CODE GE305VC



## FIXED CORNER

CODE GE305FC



## LIFTING POINT

CODE GE305LP



## CONNECTING PLATE

CODE GE305CP

