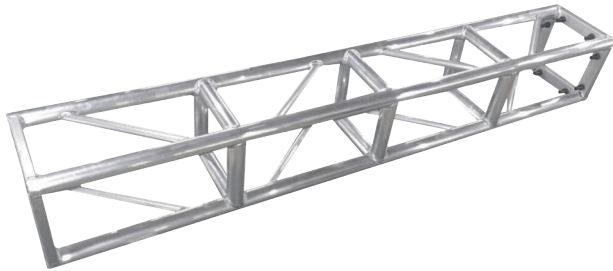




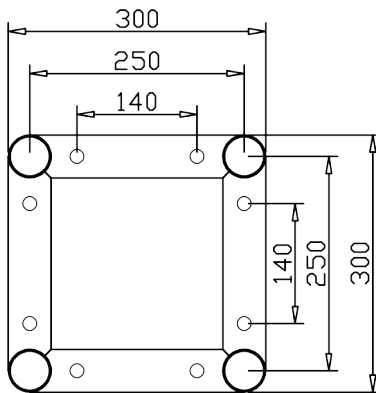
GE300A



GE300A SQUARE(AVAILABLE IN BLACK)

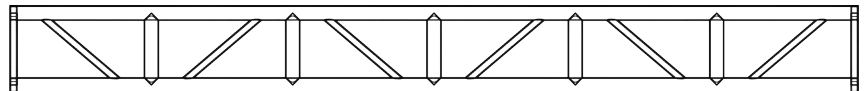
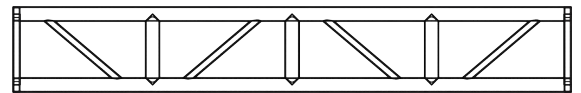
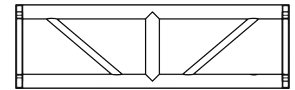
CODE	LENGTH	WEIGHT
GE300A050	50CM	6.10KG
GE300A100	100CM	9.23KG
GE300A150	150CM	12.36KG
GE300A200	200CM	15.49KG
GE300A250	250CM	18.62KG
GE300A300	300CM	21.74KG

SECTION



TECHNICAL DATA

Pipe Diameter	50mm
Wall Thickness	3.0mm
Brace	20 x2mm
Material	EN AW 6082 T6
Connectors	Included



LOAD TABLE

Span	UDL	Deflection	CPL	Deflection	Point load in third-point	Deflection	Point load in quarter-point	Deflection	Point load in fifth-point	Deflection
长度	承重量/m	弯曲度	中间点承重量	弯曲度	两点承重量	弯曲度	三点承重量	弯曲度	四点承重量	弯曲度
m	kg m	cm	kg	cm	kg	cm	kg	cm	kg	cm
2	1534.5	0.12	1534.5	0.12	1150.8	0.12	809.8	0.12	396.6	1.29
4	378.63	0.47	757.3	0.38	567.9	0.48	399.67	0.45	332.2	2.09
6	164.61	1.06	493.9	0.85	370.4	1.08	260.68	1.01	275.3	3.09
8	89.73	1.89	358.8	1.53	269.1	1.92	189.43	1.81	234.4	4.29
10	55.08	2.96	275.22	2.44	206.3	3.01	145.26	2.84	203.6	5.68
12	36.18	4.28	217.26	3.57	162.9	4.36	114.67	4.11	179.4	7.28
13	29.88	4.22	194.1	4.23	145.6	5.13	102.51	4.84	159.9	9.07
14	24.84	5.87	173.8	4.97	130.4	5.96	91.77	5.64	143.7	11.08
15	20.79	6.75	155.9	5.75	116.9	6.87	82.27	6.51	130.2	13.29
16	17.46	7.72	139.7	6.63	104.8	7.83	73.82	7.44	118.6	15.7



GE300A SQUARE

GE300A Bolt truss is adapted for conference, exhibition, and small venue work.

The truss consists of 50x3mm tubes for the main chords and 20x2mm tubes for diagonals. The trussing segments are connected by bolting together.

GE300A 系列桁架为四方架系统，其材料均为通过 EN 认证的 6082 T6 铝合金型材，主管直径为 50mm，管壁厚度 3mm，副管直径 20mm，管壁厚度 2mm。此桁架为螺丝连接方式，属于多用途展示桁架，承载能力强，适用于文艺活动，展览会等场所。桁架的设计生产遵循德国工业标准，是一款极具性价比的优势产品。桁架可依照需求进行特殊造型定制，以及表面可做烤漆处理。