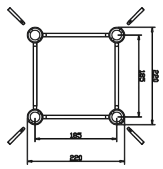


GE24 SQUARE

CODE	LENGTH	WEIGHT
GE24050	50CM	2.10KG
GE24100	100CM	3.50KG
GE24150	150CM	4.80KG
GE24200	200CM	6.10KG
GE24250	250CM	7.40KG
GE24300	300CM	8.80KG

SECTION

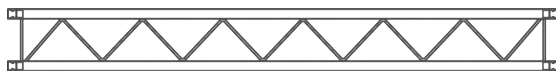
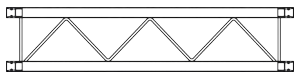


TECHNICAL DATA

Pipe Diameter	35mm
Thickness	1.6mm
Snakebrace	8mm
Material	EN AW 6082 T6
Connectors	Included

GE24 CIRCLE

CODE	DIAMETER	PART/DEG	WEIGHT
GE24R10-180	2.0M	180°	8.7KG
GE24R20-90	4.0M	90°	10.9KG
GE24R30-90	6.0M	90°	16.5KG
GE24R40-60	8.0M	60°	14.6KG



LOAD TABLE

Span	UDL	Deflection	CPL	Deflection	Point load in third-point	Deflection	Point load in quarter-point	Deflection	Point load in fifth-point	Deflection
长度	承重量/m	弯曲度	中间点承重量	弯曲度	三点承重量	弯曲度	四点承重量	弯曲度	五点承重量	弯曲度
m	kg m	cm	kg	cm	kg	cm	kg	cm	kg	cm
2,00	131	0.07	263	0.11	131	0.09	88	0.09	66	0.08
3,00	87	0.23	260	0.37	130	0.31	87	0.29	65	0.28
4,00	64	0.55	257	0.86	129	0.74	86	0.69	64	0.66
5,00	51	1.07	255	1.68	127	1.44	85	1.34	64	1.29
6,00	42	1.86	252	2.9	126	2.48	84	2.32	63	2.22
7,00	36	2.95	233	4.31	125	3.94	83	3.68	62	3.52
8,00	31	4.41	204	5.72	123	5.87	82	5.48	62	5.25
9,00	27	6.29	181	7.34	122	8.34	81	7.79	61	7.47
10,00	24	8.63	161	9.17	117	11.15	80	10.68	60	10.24



GE24 SQUARE

GE24 is a 4-point truss system. This provides optimum volume and load capacity for its construction size and a tube diameter of only 35mm. This system is connected via a special conical connector system, which is joined together to a complete form fit by means of a copper hammer, creating optimal traction.

GE24 finds application in trade fairs and shops, as well as in the event industry in general. It is also characterised by a minimum transport volume and the special lightweight design.

The conical connectors are of course included in the scope of delivery - special designs and powder coatings can be carried out at short notice.

GE24系列桁架为四方架系统，其材料均为通过EN认证的6082 T6铝合金型材，主管直径为35mm，副管为8mm铝棒，此桁架为插销连接方式，适用于工艺演出临时性结构的搭建，以及展会，商场，酒店等场所，其轻量化的设计，节省了人工和运输成本。桁架表面可做烤漆处理。

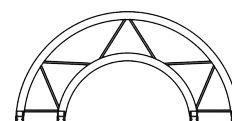
AVAILABLE IN



LADDER



TRIANGLE



CIRCULAR

45° 2 WAYS CORNER

CODE GE24C19



| 22 / 100 - 100

4.5KG

60° 2 WAYS CORNER

CODE GE24C20



| 22 / 100 - 100

4.1KG

90° 2 WAYS CORNER

CODE GE24C21



| 22 / 50 - 50

2.8KG

120° 2 WAYS CORNER

CODE GE24C22

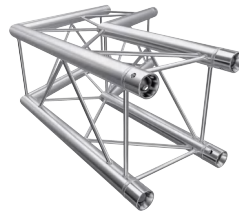


| 22 / 50 - 50

3.1KG

135° 2 WAYS CORNER

CODE GE24C23



| 22 / 50 - 50

3.45KG

90° 3 WAYS CORNER

CODE GE24C30



| 50 / 50 - 50

3.75KG

3 WAYS T CORNER

CODE GE24T35



| 22 / 50 - 50

4.0KG

90° 4 WAYS CORNER

CODE GE24T40

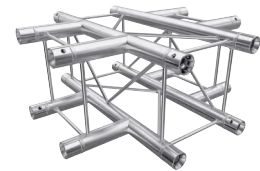


| 50 / 50 - 22

3.9KG

4 WAYS CROSS CORNER

CODE GE24C41



| 50 / 50 - 50

3.1KG

5 WAYS CORNER

CODE GE24T55

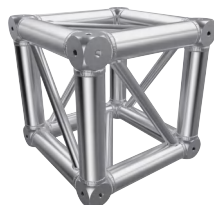


| 50 / 50 - 50

4.1KG

BOX CORNER

CODE GE24BOX



| 22 / 22 - 22

2.2KG

BASE PLATE

CODE GE24BASE



| 5 / 23 - 23

2.2KG

BASE HALF CONNECTOR

CODE GE24BASE-C



BOX HALF CONNECTOR

CODE 49196



CONICAL CONNECTOR

CODE 5014



PIN & R CLIP

CODE 5016



END CAP MALE

CODE 5008



SPACER

CODE FS24SPA

